



# Spring 2026 Grades 3-8 Accommodations Improvements

Simplifying Testing Assignments  
and Adding More Student Support





# ISBE Enhancements

The Illinois State Board of Education, or ISBE, is enhancing its statewide summative assessment system.



# Agenda

- Providing Accessibility Features and Accommodations Locally
- Improving Computer-Based Testing Accessibility
- Enhancing Online Accommodations
- Uploading Accommodations Using the Template
- Assigning Accommodations



# Reducing Administrative Steps

## Testing Platform Inputs

- TestNav Assignments
- Paper Materials

## Schools and Districts Maintenance of:

- IEP
- 504
- EL Modifications



# Reducing Administrative Steps (Removals)

## Removed from Platform

- Handheld Calculator for Online Testing
- Cover Overlay
- Amplification
- Answers Recorded in Test Book
- Braille Writer/Refreshable Braille Device
- Calculation Device or Math Tool
- Directions in Native Language
- Emergency Accommodation
- Extended Time
- Frequent Breaks
- Paper Human Read Aloud
- Human Scribe
- Separate Alternate Location
- Small Group Setting
- Student Reads Assessment Aloud to Self
- Unique Accommodations
- Word-to-Word Dictionary



**Schools and districts remain responsible** for maintaining documentation and administering supports based on student IEP, 504, and EL plans.



Coming Soon

# Reducing Administrative Steps

Winter 2026

Revised Materials
Accessibility Features and Accommodations Manual
Illinois Assessment of Readiness
Illinois Science Assessment



ISBE designs IAR and ISA to ensure  
**accessible experiences** for all students  
**as technology evolves.**





**98% of students** take IAR  
and ISA without additional  
assigned support.



Science and Math now  
include built-in text-to-speech,  
**no assignment required.**



# Computer-Based Testing

## Illinois Assessment of Readiness and Illinois Science Assessment

### TestNav Tools and Testing Features on the CBT Test

- |                            |  |
|----------------------------|--|
| • Calculator               | • Text-to-Speech for Science and Math        |
| • Eliminate Answer Choices | • Closed Captioning for ELA videos           |
| • Highlighter              | • Answer Masking                             |
| • Notepad                  | • Glossed Words                              |
| • Protractor               | • Line Reader Tool                           |
| • Ruler                    | • Spell Check for Constructed Response Items |
| • Color Contrast           | • Zoom                                       |



**Review** your student IEP, 504, and EL plans **before assigning students** any of the accommodations.





# Online Accommodations Improvements

2025

Extensions

No longer need to choose between  
Human Read Aloud and Text-to-Speech

PNP enabled Math Text-to-Speech

Speech-to-Text and Word  
Prediction for Math Not Allowed



2026

Speech-to-Text and Word Prediction

Human Read Aloud and  
Text-to-Speech on same test

Universal Math Text-to-Speech

Speech-to-Text and Word  
Prediction for Math Allowed



# Online Accommodated Form – IEP Only

## Revised Testing Assignment

### Online Accommodated ELA/L Form

- Text-to-Speech enabled
- Speech-to-Text available by PNP
- Word Prediction available by PNP
- **(NEW)** Proctor Read Aloud pre-loaded into test

### Online Accommodated Mathematics Form

- Text-to-speech enabled
- **(NEW)** Speech-to-Text pre-loaded into test
- **(NEW)** Word Prediction pre-loaded into test
- **(NEW)** Proctor Read Aloud pre-loaded into test

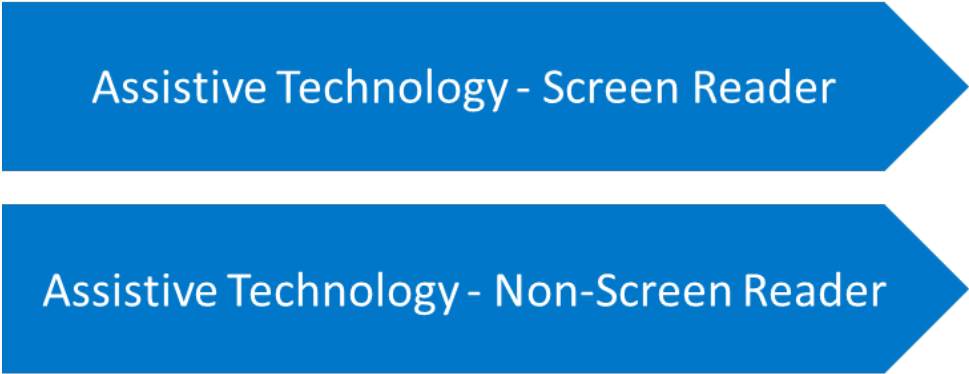
### Online Accommodated Science Form

- Text-to-Speech enabled
- **(NEW)** Speech-to-Text pre-loaded into test
- **(NEW)** Word Prediction pre-loaded into test
- **(NEW)** Proctor Read Aloud pre-loaded into test



# Online Accommodations Improvements

2025



2026



**Reference the updated Assistive Technology Guidelines**

# Access the Online Accommodations Improvements



The screenshot displays the Illinois State Board of Education's Support Page. The header features the ISE logo on the left and a navigation menu with links to Home, Technology Setup, Resources, Training, Practice Items, Family Portal, and Support. A search bar is located on the right side of the header. The main content area has a dark blue background with a photograph of the Illinois State Capitol dome. The title 'Illinois Support Page' is prominently displayed in white. Below the title, a welcome message explains the page's purpose for various users. At the bottom, a light blue banner highlights the '2025 IAR & ISA Professional Learning Workshop Registration'.

**ILLINOIS STATE BOARD OF EDUCATION**

[Home](#) [Technology Setup](#) [Resources](#) [Training](#) [Practice Items](#) [Family Portal](#) [Support](#)

Search...

## Illinois Support Page

Welcome to the Illinois Support Page. This site hosts the tools necessary for District and School Test Coordinators, Technology Coordinators, teachers, students, and test proctors to prepare for and administer the Illinois Assessment of Readiness and Illinois Science Assessment.

**2025 IAR & ISA Professional Learning Workshop Registration**





# Online Accommodations Improvements

2025

Assistive Technology - Screen Reader

Assistive Technology - Non-Screen Reader

ASL

Human Signer



2026

Online Accommodated Form –  
AT/Screen Reader Compatible

Online Accommodated Form –  
Sign Language



# Online Accommodated Form – IEP Only

## Revised Testing Assignments

### Online Accommodated Form – AT/Screen Reader Compatible

- Coded for Screen Reader software (JAWS, NVDA, Voiceover)
- **(Revision)** Compatible with Dragon Naturally Speaking, keyboards
- **(Revision)** Braille Kit available by order
- **(NEW)** TestNav Toolbar (Notepad, Calculator, etc.)



# Online Accommodated Form – ASL Revised Testing Assignments

## Online Accommodated Form – American Sign Language

- Videos of ASL signers signing each item pre-loaded into test
- **(NEW)** Human Signer (Proctor Read Aloud) pre-loaded into test

[Download the IAR ELA/L Reading Support Decision Tool](#)



# Assessment Materials - Spanish and Paper Testing

## Spanish and Paper Testing

- Computer-based Spanish test form for Math and Science
- Paper-based Spanish test form for Math and Science
- Large print Spanish test form for Math
- English Paper, Large Print, Braille for all subjects



# Assessment Materials - Paper Materials Change

## Paper Materials Change

- Ordering all paper materials through Testing platform
  - Materials Ordering window opens February 16, 2026
- Assigning Accommodations deadline



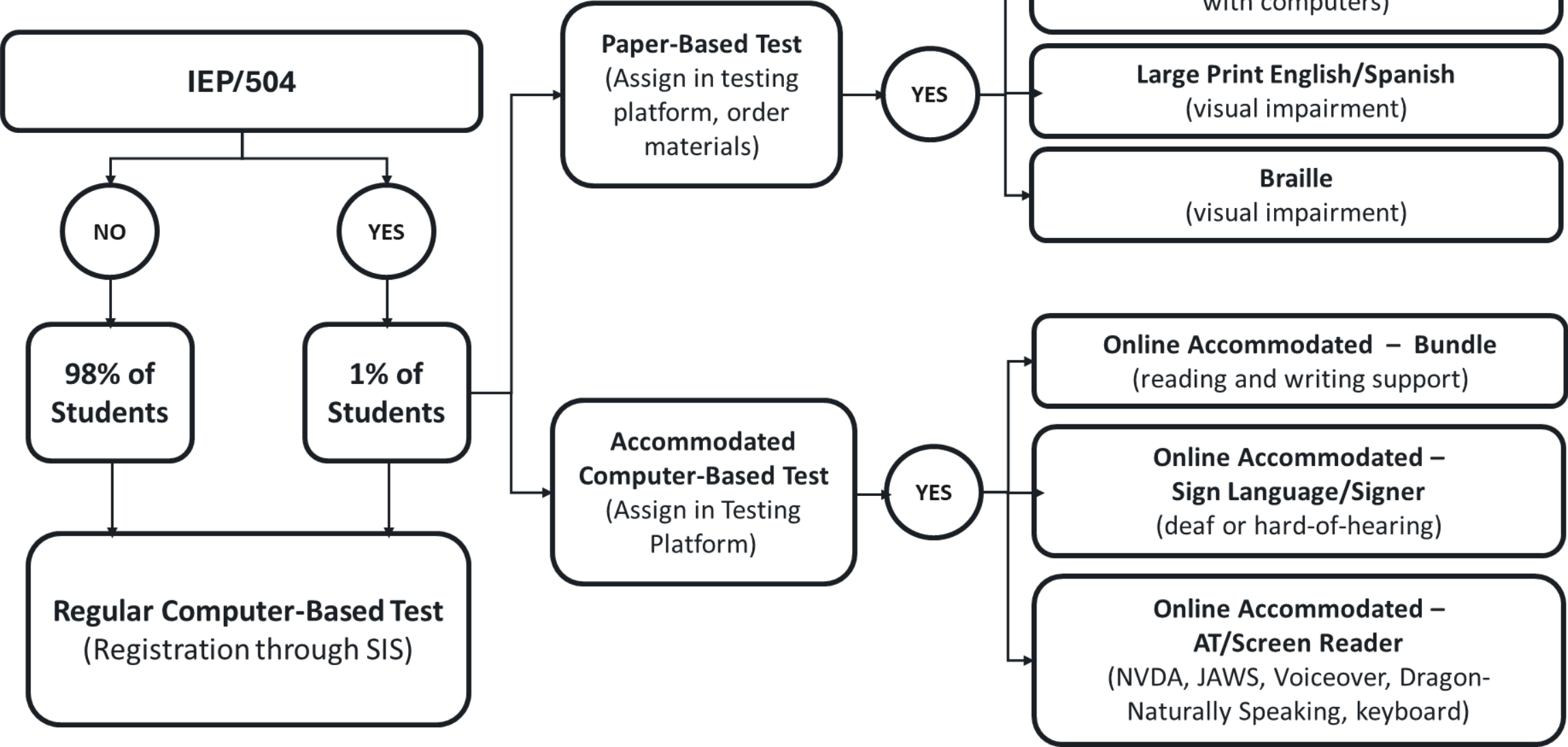
Online accommodations may be assigned **anytime before** the testing window closes.

**Allow five days for shipping when ordering paper accommodations**



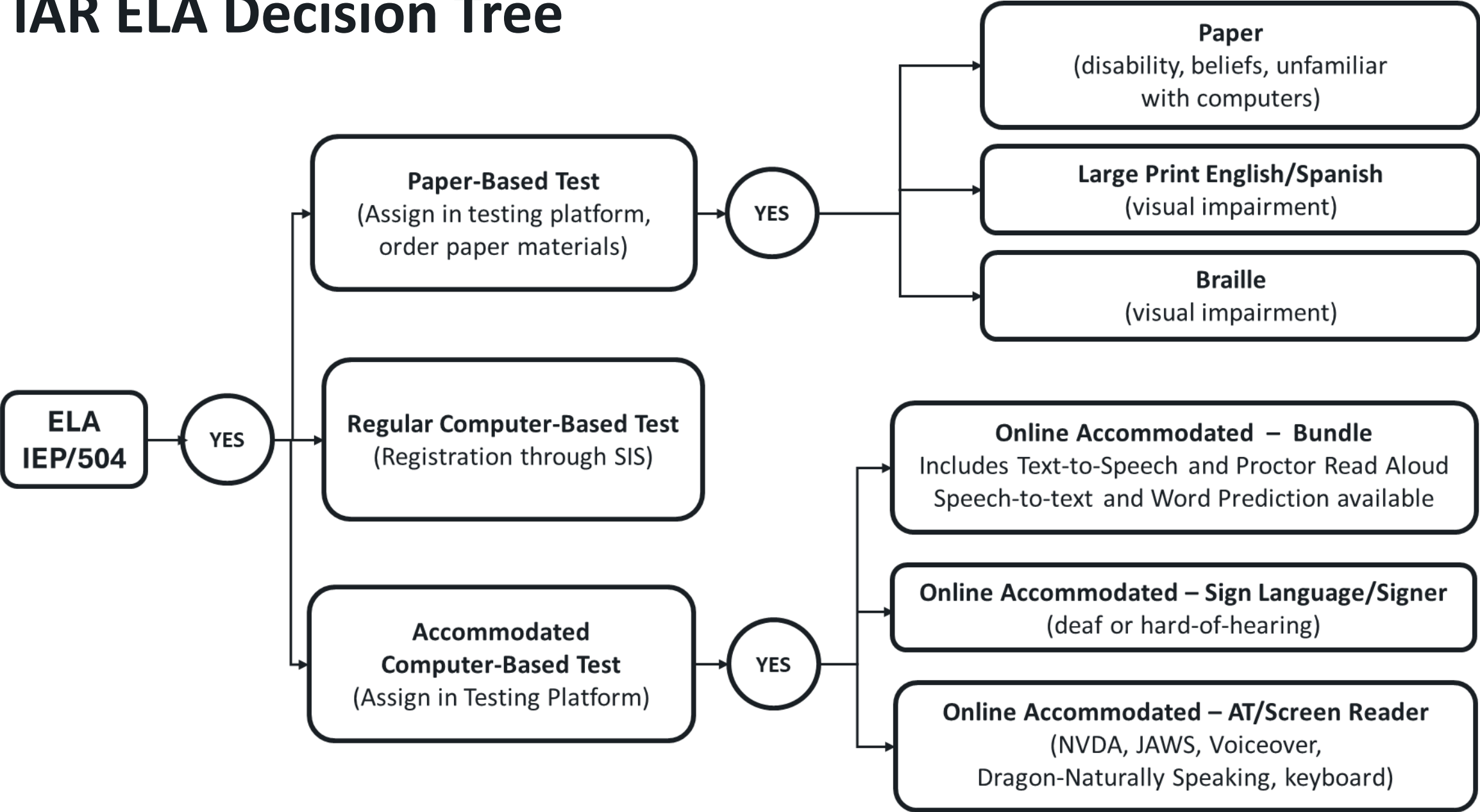


# IAR and ISA Decision Tree





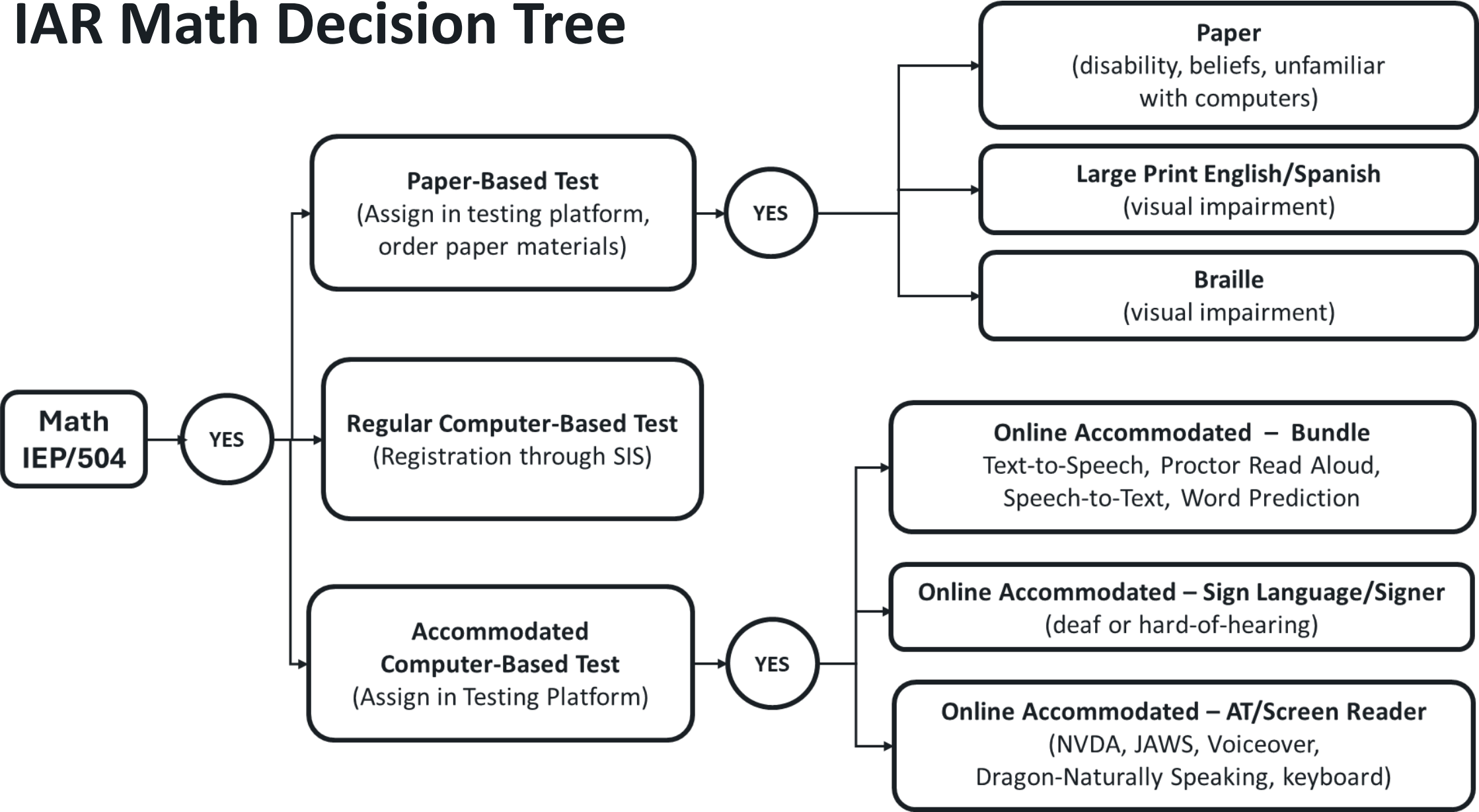
# IAR ELA Decision Tree





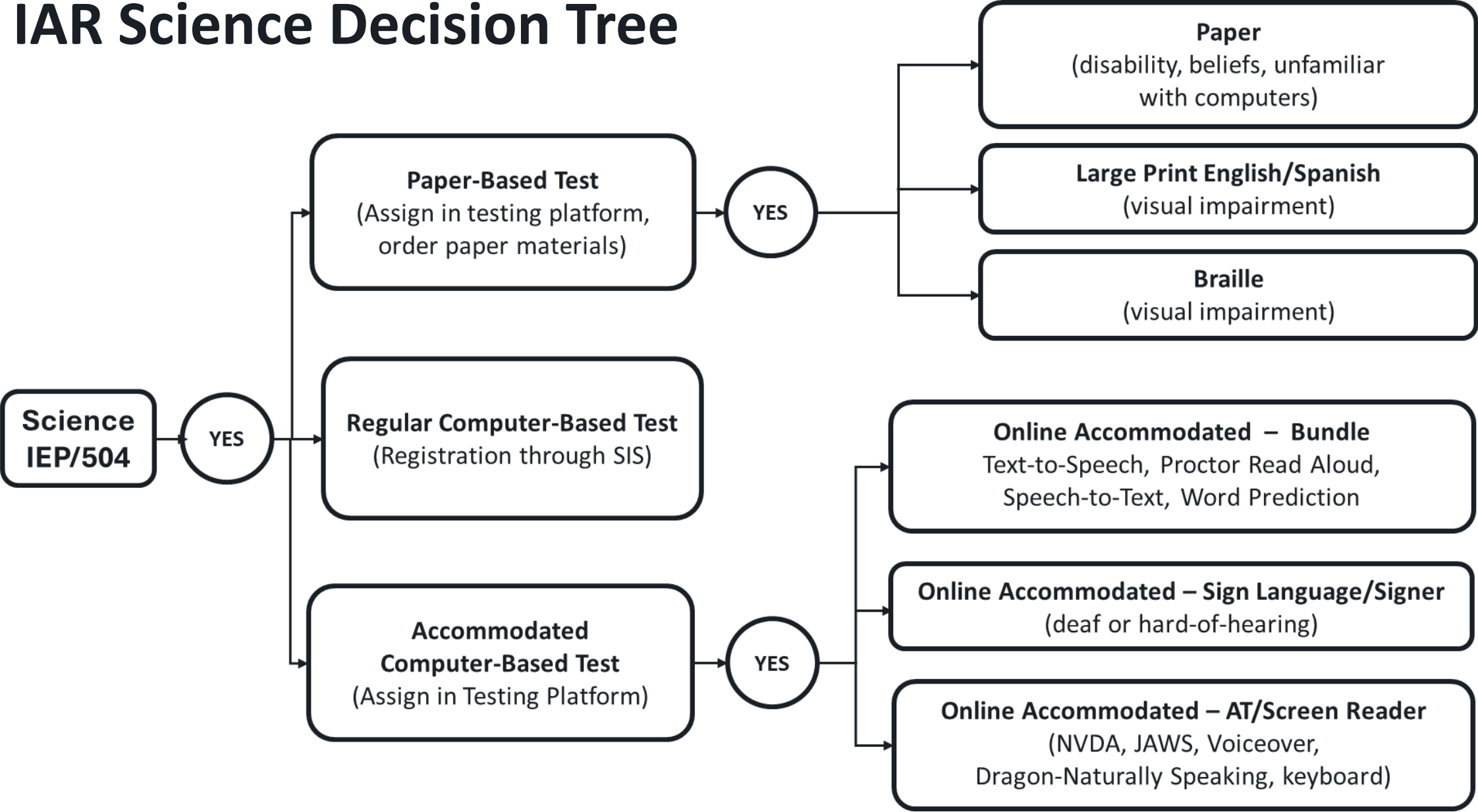


# IAR Math Decision Tree



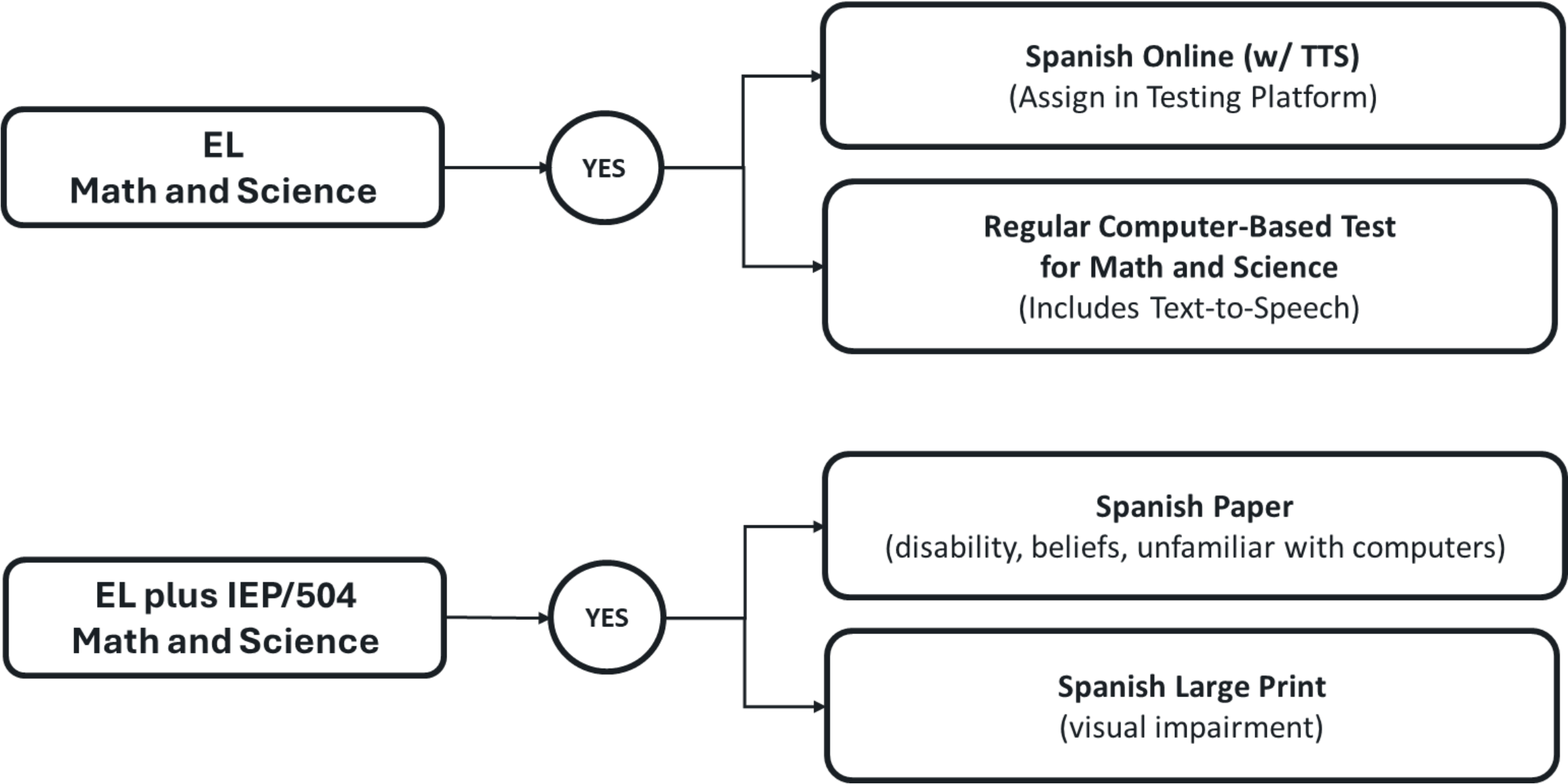


# IAR Science Decision Tree





# IAR and ISA EL Decision Tree



# Spring 2026 Accommodations Upload Template Quick Guide

Column	Accommodation	Eligible Students	Describes supports. Includes paper reminders to order materials.
I	Online Accommodated Form – AT/Screen Reader	IEP/504	Order braille materials if needed with screen reader support.
J	Online Accommodated Form – Bundle	IEP/504	Math/Science: TTS, Proctor Read Aloud, STT ELA: TTS, Proctor Read Aloud
K	Online Accommodated Form – Sign Language – Complete Test	IEP/504	ASL videos, Proctor Read Aloud for Signing
L	Online Spanish Form (w/ TTS)	EL	Math/Science: Spanish translation, Spanish TTS
M	Paper Form – Braille	IEP/504	Order braille materials



# Spring 2026 Accommodations Upload Template Quick Guide

Column	Accommodation	Eligible Students	Describes supports. Includes paper reminders to order materials.
N	Paper Form - English	IEP/504	Order paper materials
O	Paper Form – Large Print (English or Spanish)	IEP/504, EL	Order paper materials
P	Paper Form - Spanish	EL	Order paper materials
Q–U	Tool Add On – Mouse Pointer	IEP/504	Recommended for daily users
V–W	Tool Add On – Online Calculators	IEP/504	Four-function (3–7), Scientific (8)
X	Tool Add On – Speech-to-Text and Word Prediction	IEP/504	ELA/Science: Daily users with writing disability



# Spring 2026 Accommodations Upload Template

Column Header	Field Name	Eligibility IEP/504, English Learner, Both, None	What's Included	Eligible Tests	Test Format	Expected Values
A	sourceId					
B	orgName					
C	identifier					
D	familyName					
E	givenName					
F	MiddleName					
G	grades					
H	profileName					

# Spring 2026 IAR and ISA Accommodations Field Guide

## IAR and ISA Accommodations Field Guide

Read the following guidance for assigning appropriate accommodations and accessibility features for students participating in the Illinois Assessment of Readiness (IAR) and Illinois Science Assessment (ISA). Only the following accommodations will be assigned in the Illinois Administration Platform. District and School Test Coordinators will assign accommodations through the Accommodations Upload Template or through the platform user interface.

All locally provided accommodations available in Spring 2025 will continue to be provided locally for Spring 2026 and beyond. No supports have been removed from the IAR or ISA. The change is that ISBE will no longer collect locally provided supports in the testing platform. Districts and schools remain required by state and federal laws to document all student IEP/504 accommodations and EL supports.

## Eligibility Categories

- **IEP/504:** Students with disabilities who require accommodations.
- **English Learner (EL):** Students identified as English Learners.
- **Both:** Students with IEP/504 and EL status.
- **None:** Students without accommodations.

## Test Formats & Accommodations

### Online Assistive Technology Form – AT/Screen Reader (Column I)

**Student Profile Screen Reader Users:**



# Spring 2026 IAR and ISA Accommodations Field Guide



The screenshot shows the Illinois State Board of Education (ISBE) Support Page. The header features the ISBE logo on the left and a navigation menu with links to Home, Technology Setup, Resources, Training, Practice Items, Family Portal, and Support. A search bar is located on the right side of the header. The main content area has a background image of the Illinois State Capitol dome and trees. The title "Illinois Support Page" is prominently displayed, followed by a welcome message. At the bottom, there is a light blue banner for the 2025 IAR & ISA Professional Learning Workshop Registration.

**ILLINOIS STATE BOARD OF EDUCATION**

[Home](#) [Technology Setup](#) [Resources](#) [Training](#) [Practice Items](#) [Family Portal](#) [Support](#)

Search...

## Illinois Support Page

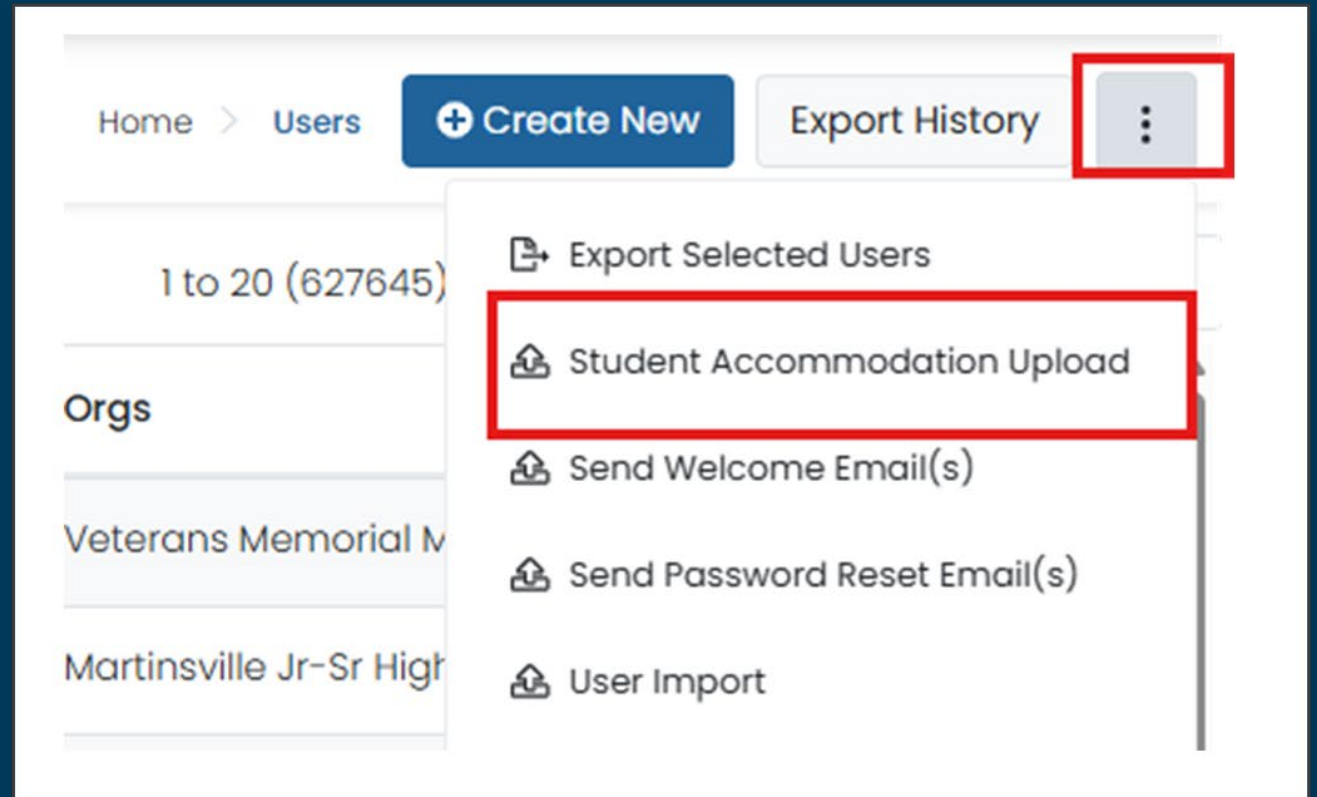
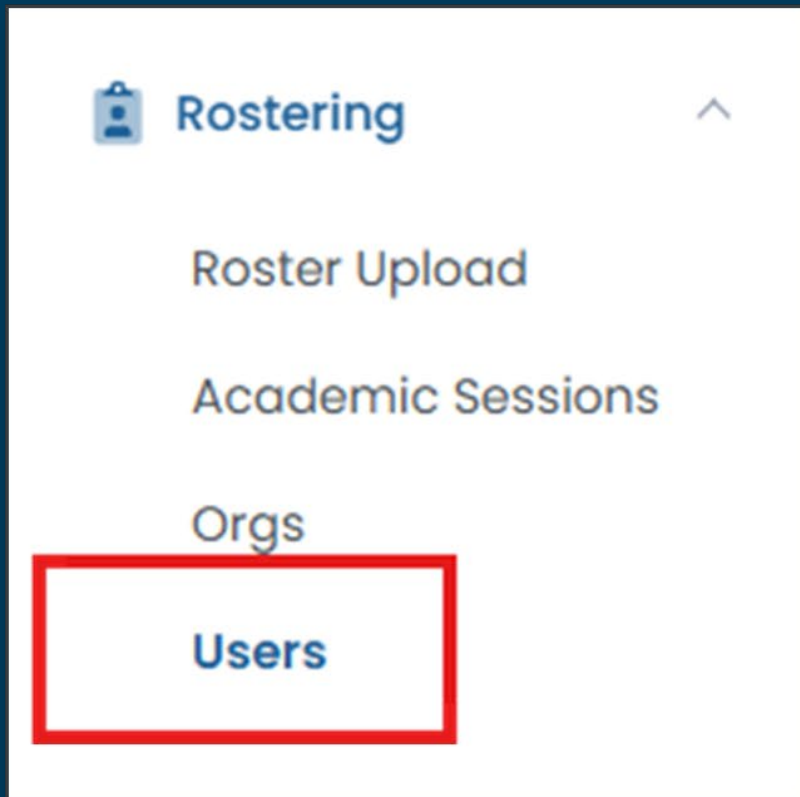
Welcome to the Illinois Support Page. This site hosts the tools necessary for District and School Test Coordinators, Technology Coordinators, teachers, students, and test proctors to prepare for and administer the Illinois Assessment of Readiness and Illinois Science Assessment.

**2025 IAR & ISA Professional Learning Workshop Registration**



# Spring 2026 Accommodations Upload Template

## Illinois Administration Platform





## Student Accommodation Upload

[Home](#) > [Users](#) > [Student Accommodation Upload](#)

Follow the instructions to modify accommodations on students in ADAM.

### Step 1:

Click the button to download the template file.

Visible Accommodations

1. Online Accommodated Form - AT/Screen Reader
2. Online Accommodated Form - Bundle
3. Online Accommodated Form - Sign Language - Complete Test
4. Online Spanish Form (w/ TTS)
5. Paper Form - Braille
6. Paper Form - English
7. Paper Form - Large Print
8. Paper Form - Spanish
9. Tool Add On - Mouse Pointer - Extra Large Black
10. Tool Add On - Mouse Pointer - Extra Large Green
11. Tool Add On - Mouse Pointer - Extra Large Red
12. Tool Add On - Mouse Pointer - Extra Large White
13. Tool Add On - Mouse Pointer - Extra Large Yellow
14. Tool Add On - Online Calculator - Four Function
15. Tool Add On - Online Calculator - TI-30 Scientific
16. Tool Add On - Speech-to-Text and Word Prediction

[Click to create template](#)

### Step 2:

- Open the file using Sheets, Numbers, or Excel.
- Each student has a row for each of the Profile types.
- Place a 1 in the cell to enable the accommodation.
- Place either a 0 or set the cell to blank to turn off the accommodation.
- If an accommodation type has multiple columns associated with it e.g. Closed Caption - English and Closed Caption - Spanish...only one of the columns can be enabled.
- Save the modified file as a .csv (comma separated values)

[Template History](#)[Upload History](#)

## Student Accommodation Upload and Update Students via CSV

Follow the instructions to modify accommodations on students in ADAM.

### Step 1:

Click the button to download the template file.

#### Visible Accommodations

1. Online Accommodated Form - AT/Screen Reader
2. Online Accommodated Form - Bundle
3. Online Accommodated Form - Sign Language - Complete Test
4. Online Spanish Form (w/ TTS)
5. Paper Form - Braille
6. Paper Form - English
7. Paper Form - Large Print
8. Paper Form - Spanish
9. Tool Add On - Mouse Pointer - Extra Large Black
10. Tool Add On - Mouse Pointer - Extra Large Green
11. Tool Add On - Mouse Pointer - Extra Large Red
12. Tool Add On - Mouse Pointer - Extra Large White
13. Tool Add On - Mouse Pointer - Extra Large Yellow
14. Tool Add On - Online Calculator - Four Function
15. Tool Add On - Online Calculator - TI-30 Scientific
16. Tool Add On - Speech-to-Text and Word Prediction

### Step 2:

- Open the file using Sheets, Numbers, or Excel.
- Each student has a row for each of the Profile types.
- Place a 1 in the cell to enable the accommodation.
- Place either a 0 or set the cell to blank to turn off the accommodation.
- If an accommodation type has multiple columns associated with it e.g. Closed Caption - English and Closed Caption - Spanish...only one of the columns can be enabled.
- Save the modified file as a .csv (comma separated values)

## Template History






[Close](#)

File Name

 Refresh

1 to 5 (5)

« ‹ 1 › »

◆ Name		◆ No of Profiles	◆ Status	◆ Percentage	◆ Created by	◆ Created
Template_f68e2c76-1cb2-4bbb-95b2-e35a5b7b88a9.csv		0	Success	100%	Woodruff, Holly	2025-10-15 05:30:17 pm
Template_ce04715b-d0fb-4527-bbf2-ee6057028f04.csv		0	Success	100%	Woodruff, Holly	2025-10-06 07:46:18 pm
Template_4354b0d2-e6a7-41cb-8d73-9533e866f179.csv		0	Success	100%	Woodruff, Holly	2025-10-06 12:15:34 pm
Template_be4ef40f-7c00-49ac-a084-4de8ed01baaa.csv		0	Success	100%	Woodruff, Holly	2025-10-02 01:10:06 pm
Template_7eda6a1b-dfc6-4318-a849-d795832b8d43.csv		3	Success	100%	Woodruff, Holly	2025-09-27 06:48:51 pm



User Config

Home > Users

Create New

Export History

Clear Search

Name or ID

Search...

Org

pearson state (pearson\_state)  
(pearson\_state)

Class

Filter by class...

Role

Filter by role...

User Status

User Status

Accommodation

Filter by Accommodation...

Advanced Filters

Results

1 to 20 (2435)

1234...

	Last Name	First Name	Identifier	Role	Classes	Grades	Orgs	Last Login	Actions
<input checked="" type="checkbox"/>	Mckee	Lillie	100002134	Student		06	Sunshine Middle School	Never	<a href="#">→</a> <a href="#">🗑️</a> <a href="#">✎</a>
<input type="checkbox"/>	Sheppard	Simeon	100002343	Student		06	Sunshine Middle School	Never	<a href="#">→</a> <a href="#">🗑️</a> <a href="#">✎</a>
<input type="checkbox"/>	Frederick	Barbara	100001254	Student		06	Sunshine Middle School	Never	<a href="#">→</a> <a href="#">🗑️</a> <a href="#">✎</a>
<input type="checkbox"/>	Bell	Jake	100002023	Student		06	Sunshine Middle School	Never	<a href="#">→</a> <a href="#">🗑️</a> <a href="#">✎</a>
<input type="checkbox"/>	Bowman	Sadie	100000986	Student		06	Sunshine Middle School	Never	<a href="#">→</a> <a href="#">🗑️</a> <a href="#">✎</a>
<input type="checkbox"/>	Harper	Blaine	100001406	Student		06	Sunshine Middle School	Never	<a href="#">→</a> <a href="#">🗑️</a> <a href="#">✎</a>
<input type="checkbox"/>	Garner	Shaun	100000703	Student		06	Sunshine Middle School	Never	<a href="#">→</a> <a href="#">🗑️</a> <a href="#">✎</a>
<input type="checkbox"/>	Murray	Aya	100001746	Student		06	Sunshine Middle School	Never	<a href="#">→</a> <a href="#">🗑️</a> <a href="#">✎</a>
<input type="checkbox"/>	Munoz	Niall	100000723	Student		06	Sunshine Middle School	Never	<a href="#">→</a> <a href="#">🗑️</a> <a href="#">✎</a>
<input type="checkbox"/>	David	Lydia	100000284	Student		06	Sunshine Middle School	Never	<a href="#">→</a> <a href="#">🗑️</a> <a href="#">✎</a>



User Setup: **Mckee, Lillie**

Accommodations

Administrations


Demographics

History

Information

Metadata

 View

 Edit

## Accommodations

### Tool Add On – Speech-to-Text and Word Prediction

If checked, the student will have Speech-to-Text and Word Prediction.

ELA

### Online Accommodated Form – Bundle

If checked the student will be indicated for Read Aloud/Human Reader.

ELA

Math

Science



←

User Setup: **Mckee, Lillie**

Cancel

Save

Accommodations

Administrations

Demographics

History

Information

Metadata

View

Edit

Filter by Accommodation...

Expand/Collapse All

ELA

Apply to All

Math

Science

▼ Form-Based

Online Accommodated Form - Sign Language

If selected, the student will have the corresponding Human Signer accommodation.

None

>

None

None

Paper Form

If selected, the student will have the corresponding Paper with Language accommodation. \* If the student needs Spanish Large Print, selecte Spanish in the dropdown AND check the Large Print option.

None

>

None

None

Online Accommodated Form - Bundle

If checked the student will be indicated for Read Aloud/Human Reader.

☒

>

☐

☐




# Updating Accommodations in AUT

A	B	C	D	E	F	G	H	I	J	K	L	M
sourcedId	orgName	identifier	familyName	givenName	middleName	grades	profileName	Online Accommodated Form - AT/Screen Reader	Online Accommodated Form - Bundle	Online Accommodated Form - Sign Language - Complete Test	Online Spanish Form (w/ TTS)	Paper Form - Braille
lpi:prd:L3s						5	Math					
lpi:prd:L3s						5	Science					
lpi:prd:L3s						5	ELA		1		NA	







# Updating Accommodations in User Interface

1


-  Rostering
  - Roster Upload
  - Academic Sessions
  - Orgs
  - Users**

2

	Last Name	First Name	Last Login	Actions
<input checked="" type="checkbox"/>	Mckee	Lillie	Never	  

3

 User Setup: **Mckee, Lillie**

**Accommodations**  View  Edit

# Spring 2026 Accommodations Upload Template

## Illinois Administration Platform

The image is a composite of three screenshots from the Illinois Administration Platform, illustrating the steps to upload a Student Accommodation Upload template. Red circles with numbers 1, 2, and 3 indicate the sequence of steps.

**Step 1:** The first screenshot shows the 'Rostering' sidebar menu. The 'Users' option is highlighted with a red box.

**Step 2:** The second screenshot shows the 'Users' page. The 'Create New' button is highlighted with a red box. A dropdown menu is open, showing the 'Student Accommodation Upload' option, which is also highlighted with a red box.

**Step 3:** The third screenshot shows the 'Click to create template' dialog. The 'Choose a file or drop it here...' input field is highlighted with a red box. Below this, the text 'Step 3: Upload the modified file into ADAM.' is displayed. At the bottom right, there is a 'Browse' button.



# Accessibility Features and Accommodations

## Winter 2026

### Side-by-Side Test Proctor

- Directions in Native Language

### Accessibility and Accommodations Manual

- Tailored for IAR and ISA
- Test Assignment Scenarios to support Accommodation selection
- New alternative text guidelines for ELA/L, Math, and Science



# Contact Information

**Email Pearson:**

[SCHIllinoisTeam@pearson.com](mailto:SCHIllinoisTeam@pearson.com)

**Illinois Customer Support:**

1-833-213-3879

**Illinois Support Page**

<https://il.mypearsonsupport.com/>